

## INSTRUCTION OF MULTI QUICK CHARGER

This is a charger which can charge quickly in thirty (30) minutes various chromium-nickel batteries with 12-V current for RC Model. The Charger also can charge in wide scope of these chromium-nickel batteries, such as 6V-425mAh, 6V-500mAh, 7.2-600mAh, 6V-1200mAh, 7.2V-1200mAh and 6V-4000mAh etc.

### SPECIAL FEATURES OF THE MULTI QUICK CHARGER

- To charge appropriate current to wide scope of various chromium-nickel batteries, 6V-7.2V, 425-4000 mAh.
- It only takes thirty (30) minutes to reach excellent charge effect and the usage period of battery is prolonged. (The company also supplies 15-minute quick charger.)
- If the timer is set to the position of "OFF", the charger will automatically adjust charging low current and which will almost

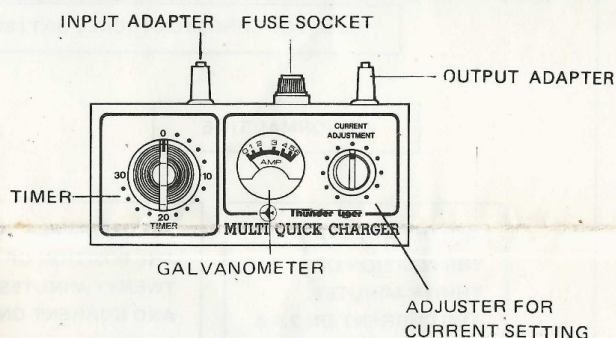
reach the effect of full charge.

- With galvanometer, it can ensure the charge current and reach an exact charge.
- A8 for the charge of chromium-nickel batteries, 425, 500 and 600 mAh, charge should be stopped as soon as 30-minute charge of low current has been finished.

### DATE OF TECHNIQUE

- Pattern : Pattern to ascertain a quick charge, with low-current charge device attached.
- Applicable Battery : 5-6N (6-7.2V), which capacity is 425-400 mAh for quick charge.
- Input Voltage : DC 12V
- Charge Current : Set the timer to the position of "OFF", and then charge with low current (about 0.3A).
- Timer : 1-30 minutes (By means of spring)
- Input Socket : Cigarette ignitor plug.
- Output Socket : By one-touch (Spring pattern)
- Outward Dimension : 170mmx77mmx45mm
- Weight : 380 kgs

### NAME OF EACH PART



### OPERATION INSTRUCTIONS (Read it carefully before operation.)

1. Method of Connecting with 12V Battery: Insert the plug of lighter of the charger into the socket of car ignitor. As directly touch 12V battery, please use the specific adapter # 2193 for quick charger.
2. Connect Chromium-Nickel Battery with Adapter: Charge the chromium-nickel battery which has been completely discharged. Here, also make sure + and - . (For Thunder Tiger, the red is positive and the black is negative. However, some other brand there are difference in direction of adapter and color of electric wire.) If based on ammeter, the indication is about 0.3A, low charge.
3. The Setting for Timer and Current Charge: Due to various chromium-nickel batteries (500,600,1200 mAh, etc.), the setting for timer and current charge are different. Before charging, look at the ammeter of charge carefully.
  - In charging, if the battery gets hot, the charge should be stopped. (During charging, do not leave the charger.)
  - In order to prolong the use period of battery and heighten charge efficiency, it is better to charge by low current.

\* The chromium-nickel battery will be out of order if the positive and negative is wrong connected.

### Ammeter of Charge

Type of Battery (mAh)	Ammeter of Charge			
	20	25	30	30x2
5N (6V) or 6N (7.2V)	425	1.2A	1.0A	
	500	1.5A	1.2A	1.0A
	600	1.8A	1.4A	1.2A
	1200	3.6A	2.8A	2.4A
	1800			3.6A
4000				3.6A

### AS CHARGE CAN NOT NORMALLY RUN

1. The pointer of the ammeter can not move (can not charge):
  - A. The socket of cigarette ignitor is dirty and so resulting in improper contact. (If there is cigarette ashes in the interior, please cleanse it.)
  - B. If the fuse is broken? (Check up the reason of break before replacing a new one (5A)).
  - C. If the connection of output socket and charge adapter is normal? (Check if the copper portion of electric wire is clamped tight by the socket?)
  - D. If the adapter for charge and for

chromium-nickel battery are deformed or rusted and so occurs improper contact? (Rectify the deformation or replace new adapter.)

- E. If the interior line of chromium-nickel battery is broken?
2. The charge current is not stable (The swinging of ammeter pointer is not stable): Please check the former items, A, D and E.
  3. When the charge current is set and knob turned rightward, the ammeter has no motion:
    - A. Check the head battery whether the voltage is 12V or not.

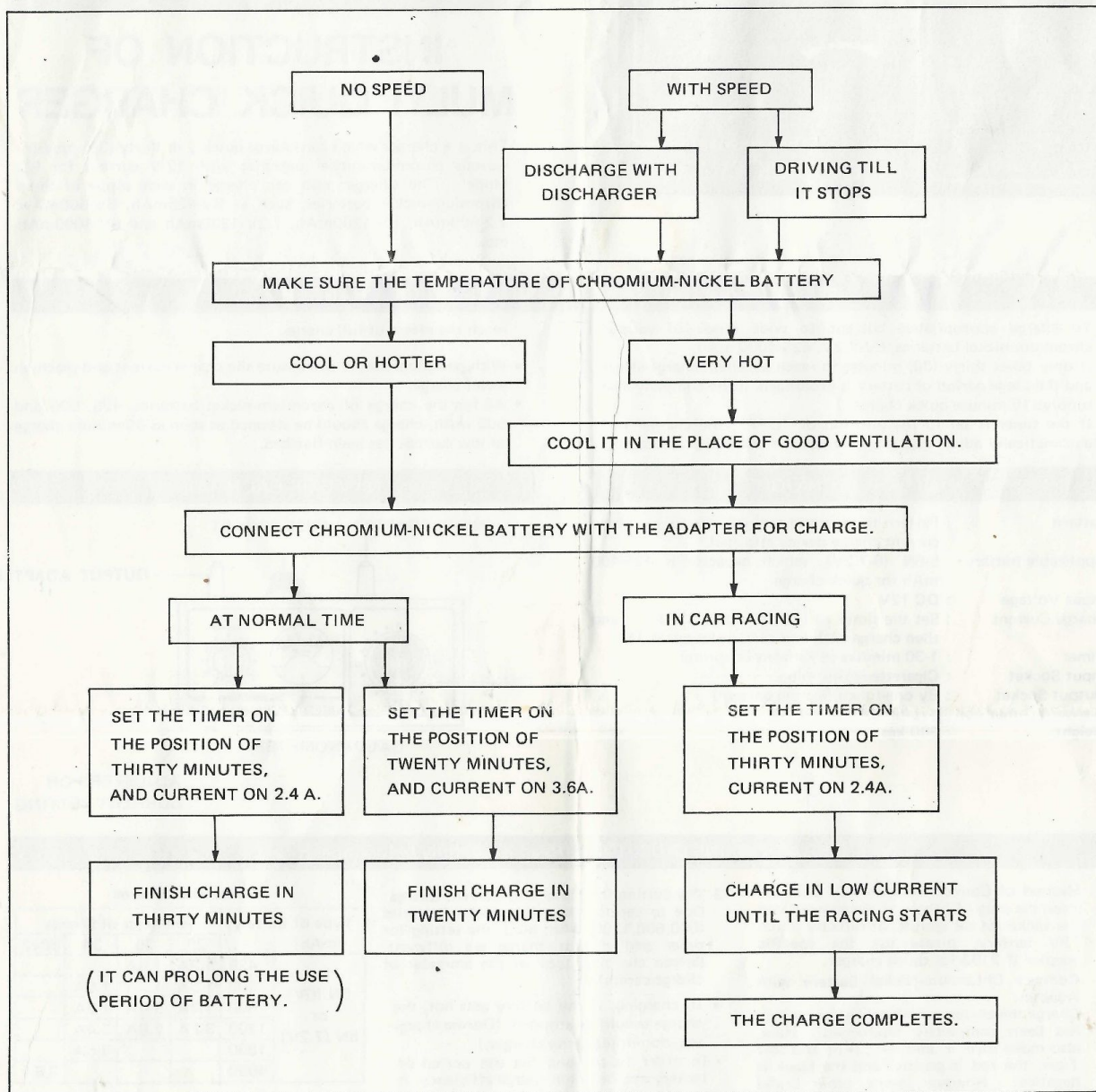
B. When charge with 6N 1200 (7.2V), the charge starts from 3.6A, as the charge is finished, it descends to be 2.5A, which phenomenon doesn't mean malfunction. However, this doesn't happen to the charge of 5N 1200 (6V).

### NOTICE:

- The company is not liable for the damage of chromium-nickel battery resulting from wrong usage.
- Do keep the battery away from direct sunshine. And do not use it in the closed car.
- Do not use it on the petal in a car.



# METHOD OF CHARGE WITH 6N 1200 FOR RC MODEL



## SUGGESTIONS OF THE AMMETER OF CHARGE

Ammeter of Charge

Type of Battery (mAh)	Charging Time (Minutes)			
	20	25	30	30x2
5N (6V)	425			
	500			
6N (7.2)	600		(3) 1.2A	
	1200	(2) 3.6A	(1) 2.4A	
	1800			
	4000			

### EXAMPLES OF CHARGE:

- When the charge with 6N 1200 is going in thirty minutes, the setting of timer is thirty minutes, adjustment of current is as the table: the point of intersection of 1200 mAh and 30 minutes, 2.4A is available.
- If there is no time, set the timer at the point of 20, it is necessary to turn the knob to get the scale of 3.6A on the ammeter.
- When the charge with 6N 1200 is going in thirty minutes, set the ammeter on the point of intersection, 600 mAh and 30 minutes, 1.2A.

### **THUNDER TIGER MODEL CO.**

NO. 7, 6TH ROAD INDUSTRY PARK TAICHUNG, TAIWAN, R.O.C. 400  
 PHONE: (04) 2511616  
 CABLE: "T TIGER" TAICHUNG  
 TELEX: 51491 TTMODEL  
 FAX: (04) 2540902